



Innovations

Bangladesh Forest Department
Ministry of Environment, Forest and Climate Change

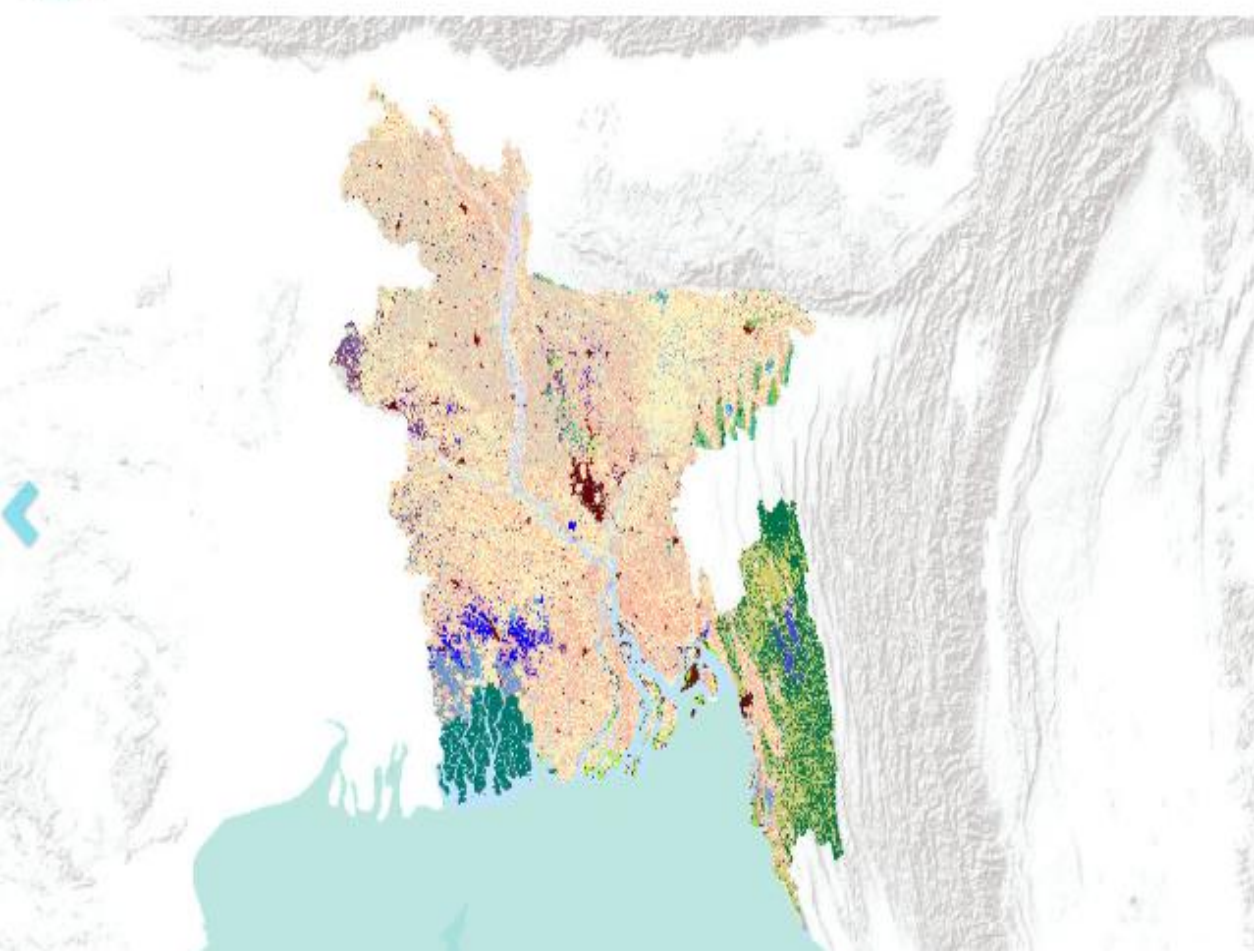




Bangladesh Forest Information System GeoPortal



Link: <http://geoportal.bforest.gov.bd>



GeoPortal

BFIS Geoportal is the national platform to integrate and access geospatial information for forestry in Bangladesh developed under the Bangladesh Forest Department. The BFIS Geoportal provides geospatial information related to forest and land cover.

Bangladesh Forest Information System(BFIS)

BFIS is the information system of the Bangladesh Forest Department. The BFIS is an integrated system which is used to support planning, implementation and monitoring of multi-objective forest management activities. The BFIS aims at providing the necessary information for planning, implementation, and operational control in and across administrative units.

The BFIS has been designed as a user-friendly, interactive web-based platform that can respond to the diverse needs of people interested in forestry of Bangladesh.



What is Geoportal?

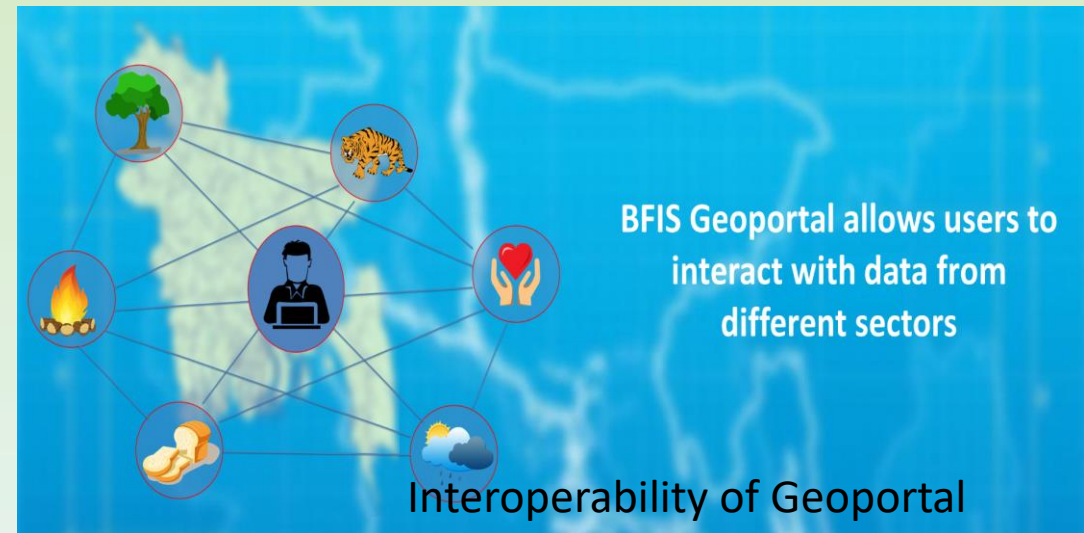
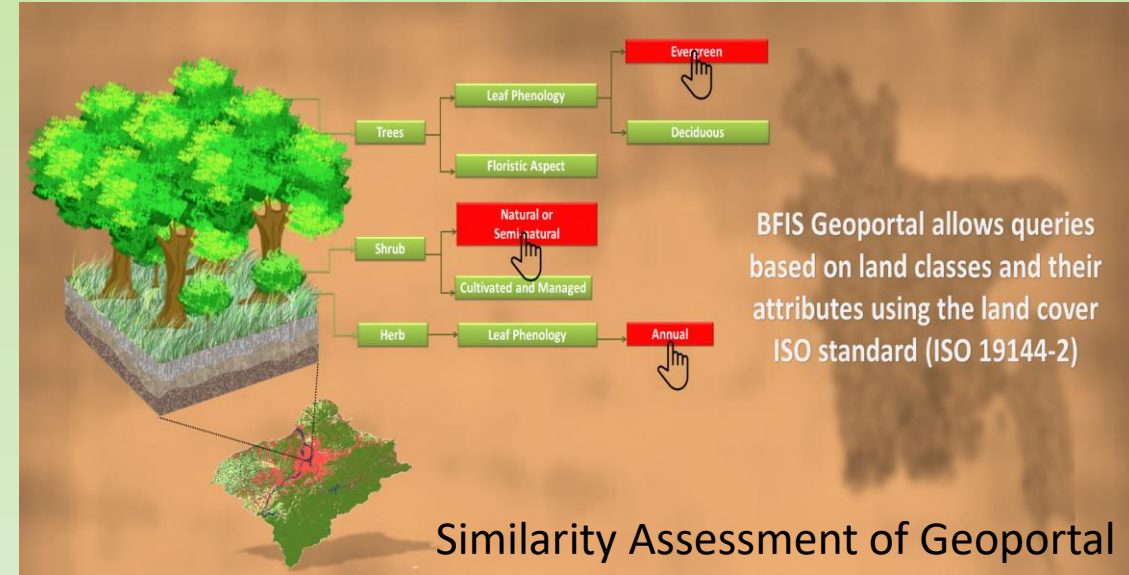
BFIS Geoportal is the national platform to integrate and access geospatial information for forestry in Bangladesh developed under the Bangladesh Forest Department. The BFIS Geoportal provides geospatial information related to forest and land cover. Users can upload layers and interrogate existing databases using the last ISO standard on land cover.



Purpose of Geoportal

Geoportal is one of the module of BFIS (Bangladesh Forest Information System) The purpose of this customized GeoNode based platform to access geospatial information related to forest and land cover of Bangladesh. The platform is designed to **share, modify, similarity assessment and create interactive maps.**

This web-based application is built on top of National Geoportal *GeoDASH* that allows interoperability to share geospatial data of another WMS(webs map service) supported platforms.



Key Functions of Geoportal 1

Customize layer default style

Geoportal map client allows customization of layer default style and add multiple styles as per user choice.

Upload Layers

From upload layer section upload the layer to customize

Upload Layers

Allowed layer types:

✓ Shape Layer: [shp](#) [shx](#) [dbf](#) [prj](#) [lccs](#) [xsd](#)

* Title

Name of your data layer

* Select Organization

administrative

* Select Category

administrative

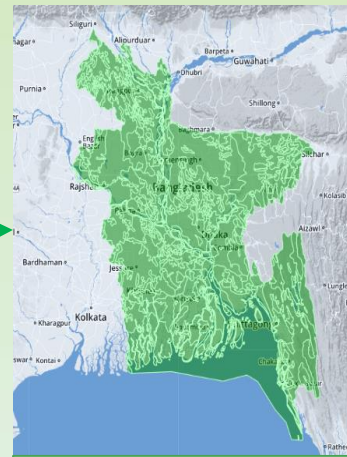
* Select uploaded file type

shp shx dbf prj lccs xsd

Step 1

Explore Layers

Explore layer section allows edit and customize layer style



Step 2

Style

Edit Style section allows:

- Add new style
- Edit style rule by changing legend color
- Save new style

Style Rule: New Rule

BASIC Labels Advanced Chart

Name: Symbol:

✓ Fill

Color: #E053F9

Opacity: [Slider]

✓ Stroke

Style: solid

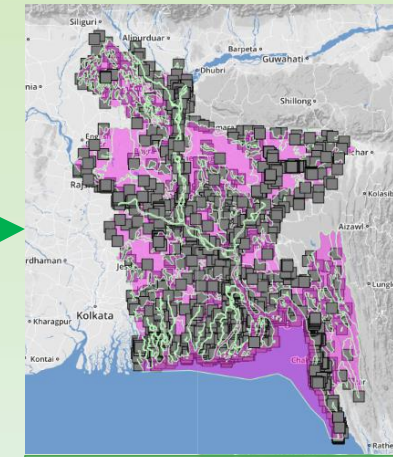
Color: #bbffbb

Width: 0.7

Cancel Save

Step 3

Preview map by choosing customized style



Step 4



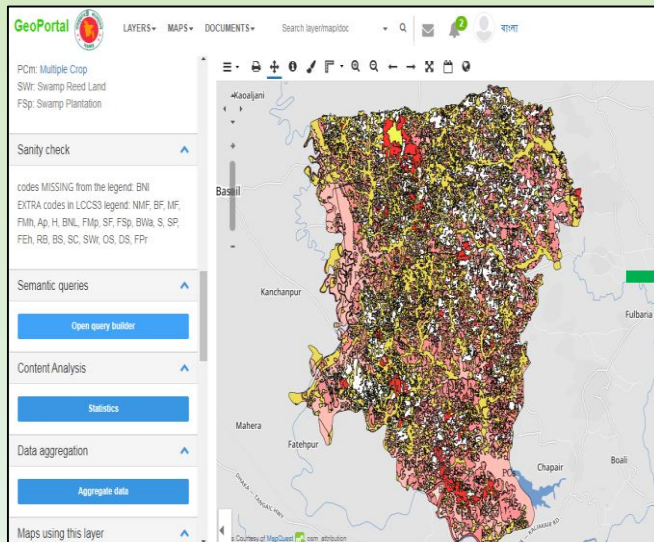
Key Functions of Geoportal 2

Semantic queries

The query builder window shows the options for users to create query class and run the query and remap the layer classes.

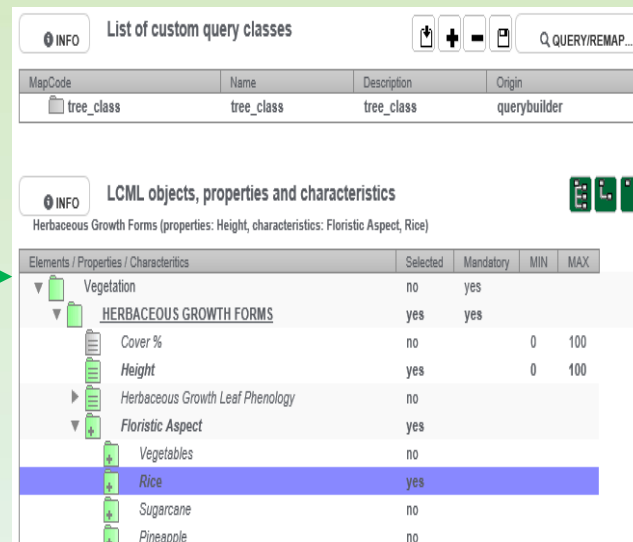
Semantic queries

This Legend Builder allows the users to define a set of semantic "filters" or legend classes, using the LCML objects currently present/defined into the database



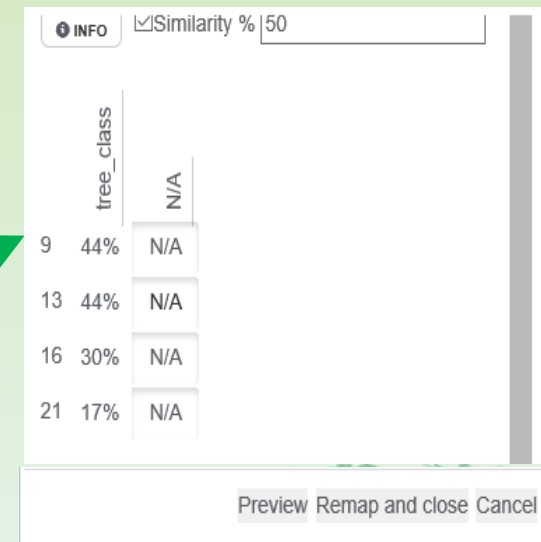
Query Builder

Query class to create and define class properties

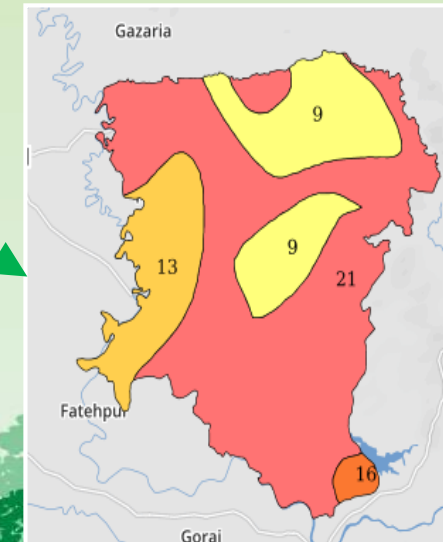


Query and Preview

Data base with the calculated similarity scores for a querying class



Remap and new layer



Key Functions of Geoportal 3

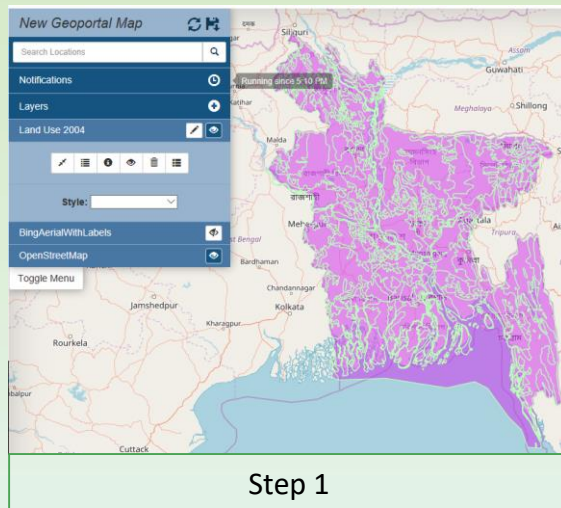
Map interrogation by filtering attribute

The map client offers interactive way to create map by interrogating the layer attributes.

Layer Edit

Layer edit section allows to do followings

- filter attribute table
- Apply filter
- Show on map
- Add WMS server to call layer from other geoserver



Interrogate attribute

From table view section attribute table can be filtered by selecting attribute/attributes

Table View

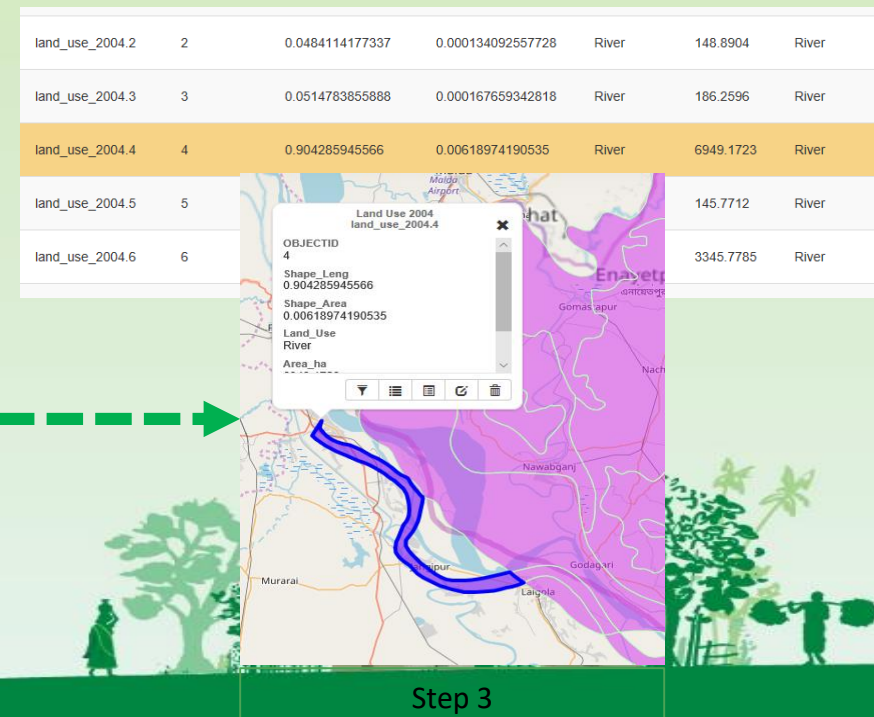
River x Advanced Filters

Feature ID	OBJECTID	Shape_Leng	Shape_Area	Land_Us
land_use_2004.1	1	0.0321467253225	0.000036311480014	River
land_use_2004.2	2	0.0484114177337	0.000134092557728	River
land_use_2004.3	3	0.0514783855888	0.000167659342818	River
land_use_2004.4	4	0.904285945566	0.00618974190535	River
land_use_2004.5	5	0.0689760421117	0.000129893781458	River

Page 1 of 24 576 features

Step 2

Select River polygon and view on map



Key Functions of Geoportal 4

Attribute Table of a Layer with advanced query options

Table View

Apply Filters Clear Filters Advanced Filters

Filter by Attribute:

Feature ID	LCCS_code	CLASS_NAME	AREA_HA	DIVNAME	DISTNAME	THANANAME	UNINAME	UNICOD
akash_102.1	BH	Perennial Beels/Haors	2.83462600736	Dhaka	Tangail	Mirzapur	Ajgana	3093661
akash_102.2	BH	Perennial Beels/Haors	3.55265756523	Dhaka	Tangail	Mirzapur	Ajgana	3093661
akash_102.3	BNI	Built-Up Non-Linear	0.271531102658	Dhaka	Tangail	Mirzapur	Ajgana	3093661
akash_102.4	Br	Brickfield	15.6010773891	Dhaka	Tangail	Mirzapur	Ajgana	3093661
akash_102.5	Br	Brickfield	1.73334895944	Dhaka	Tangail	Mirzapur	Ajgana	3093661
akash_102.6	Br	Brickfield	13.847109079	Dhaka	Tangail	Mirzapur	Ajgana	3093661
akash_102.7	Br	Brickfield	0.874232176995	Dhaka	Tangail	Mirzapur	Ajgana	3093661
akash_102.8	Br	Brickfield	1.53613374142	Dhaka	Tangail	Mirzapur	Ajgana	3093661
akash_102.9	Br	Brickfield	0.894614910059	Dhaka	Tangail	Mirzapur	Ajgana	3093661

Page 1 of 336 8,378 features CSV with geometry

Advantages

1. know the tree and forest Cover areas according to district, upazila and Union
2. Know the tree cover loss and gain
3. Share geospatial data on tree and land cover to the stakeholders
4. Use of geospatial data for planning

